

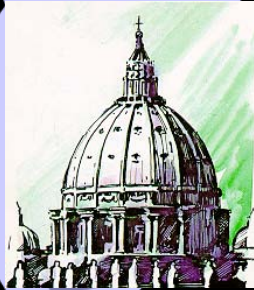


# Missionaries of the Sacred Heart Structure and Decision Making

## Setting Gears in Motion

# Setting Gears in Motion

Church



Provinces/Regions/Missions



Economic Forces

Societal Forces



MSC Institute

Political Forces

# Church

## ☀ Purpose:

- ☀ Mission of Jesus
- ☀ Evangelization

## ☀ People: People of God

## ☀ Philosophy:

- ☀ Word of God
- ☀ Teachings & Traditions

## ☀ Property: Land & Buildings



# Church



## ☀ Authority and Governance

### ☀ Universal: Pope and Bishops

#### ☀ Canon Law

- Code of Church Laws
- All facets of Church life

### ☀ Local: Diocese and Bishop (“Ordinary”)

- ☀ Local representation, authority and influence

# Church

## ☀ Responsibilities

- Calls to Mission
- Gives guidance and direction
- Identifies issues
  - Papal Documents / Encyclicals
    - Tertio Millennium, Ex Corde Ecclesia, Spe salvi, Deus caritas est
    - Peace and Justice, Immigration, Call to Laity, Ethical and Religious Directives in Health Care, etc.
  - Local Conference of Bishops (in U.S., USCCB)
    - Church in America, Welcoming the Stranger Among Us, Called and Gifted



# MSC Institute Worldwide



# MSC Institute



## ☀ Authority and Governance

- ☀ Recognized and approved by the Church to continue the mission of Jesus
- ☀ Superior General (6 year term of office 2008 – 2014)
  - Sr. Patricia Spillane, MSC
- ☀ Assistant Generals (6 year term of office 2008 -2014)
  - Sr. Joan McGlinchey – Stella Maris
  - Sr. Maria Aparecida Correa de Castro, MSC – Latin America
  - Sr. Loredana Manzoni – Europe
- ☀ Provincial (3 year term of office 1/2009 – 1/2011)
  - Provincial Council

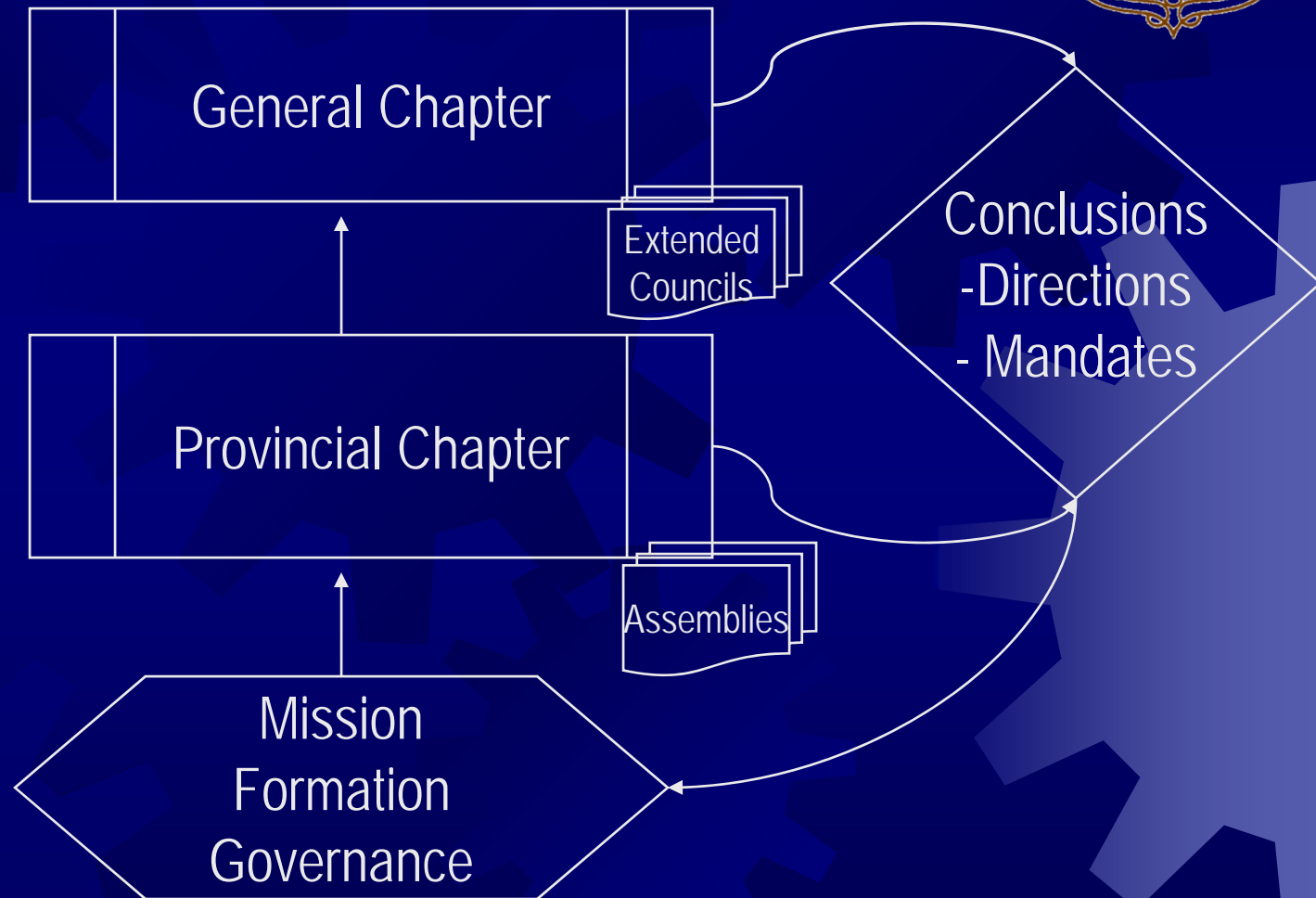
# MSC Institute

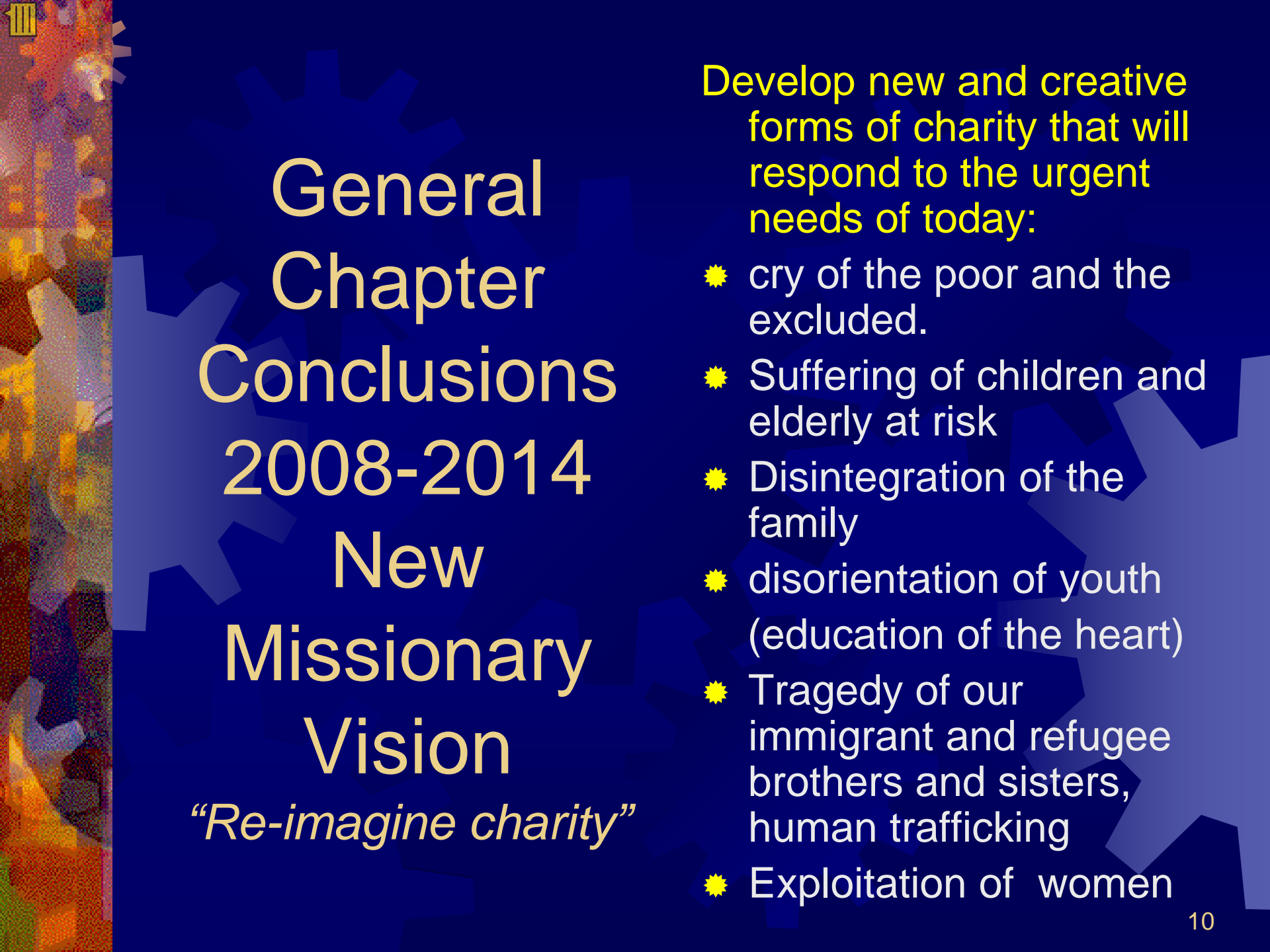


## ☀ Responsibilities

- ☀ General Chapter - implement conclusions
- ☀ Convoques General Chapter Every 6 Years
  - The highest Governing Authority in Institute
  - Convenes Extended Councils between Chapters
- ☀ Foster charism and mission
- ☀ International communion and solidarity
- ☀ Formation
  - Religious and Lay
- ☀ Finances and Stewardship of resources
  - Administration and uses within limits set by Canon Law, Bishop Conferences and MSC General Chapter
- ☀ Creation of new works in response to world needs

# MSC Decision Making – Chapter Process





# General Chapter Conclusions 2008-2014 New Missionary Vision *“Re-imagine charity”*

Develop new and creative forms of charity that will respond to the urgent needs of today:

- ✦ cry of the poor and the excluded.
- ✦ Suffering of children and elderly at risk
- ✦ Disintegration of the family
- ✦ disorientation of youth (education of the heart)
- ✦ Tragedy of our immigrant and refugee brothers and sisters, human trafficking
- ✦ Exploitation of women

# MSC Province



## ☀ Authority and Governance

- ☀ Provincial (3 year term of office 1/2009 – 1/2011)
  - Provincial Council

## ☀ Responsibilities

- ☀ Implementation of the General Chapter Conclusions
- ☀ Implementation of Mission
- ☀ Religious Life and Community
- ☀ Leadership – governance
- ☀ Stewardship of resources

# Mission



## ☀️ Caring

- St. Cabrini Home Inc.
- Cabrini Retreat Center
- St. Frances Cabrini Shrine
- Mother Cabrini Shrine
- Cabrini Ministries Hostel
- Cabrini Immigrant Services
- Cabrini Mission Corps
- Save Our Street Children Foundation Inc. – Philippines
- UNANIMA, Int.

## ☀️ Giving

- Cabrini Mission Foundation

## ☀️ Healing

- Cabrini Eldercare:
  - St. Cabrini Nursing Home
  - Cabrini Center for Nursing and Rehabilitation
  - Senior Housing
- St. Anthony Hospital
- Cabrini Health - Australia
- Cabrini Ministries – Swaziland

## ☀️ Teaching

- Cabrini College
- Mother Cabrini High School
- Cabrini High School

# Setting Gears in Motion

Church



Provinces/Regions/Missions



Economic Forces

Societal Forces



Political Forces

MSC Institute